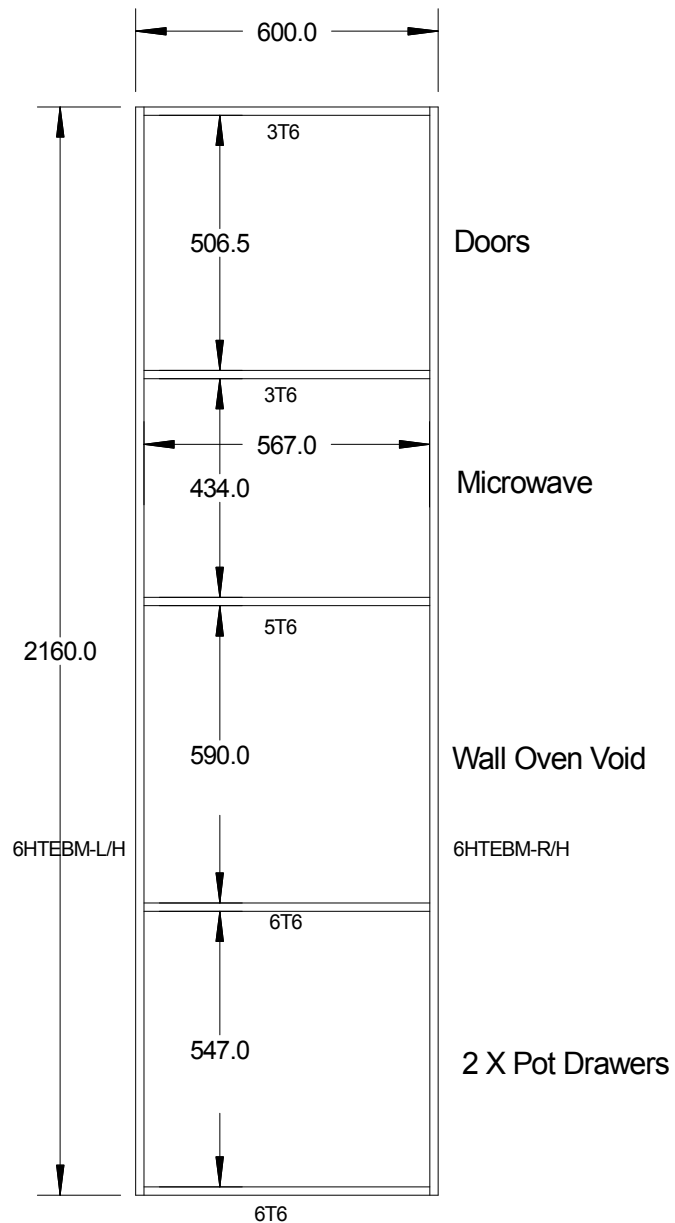


MWOHM600 Standard Carcase



Front Elevation

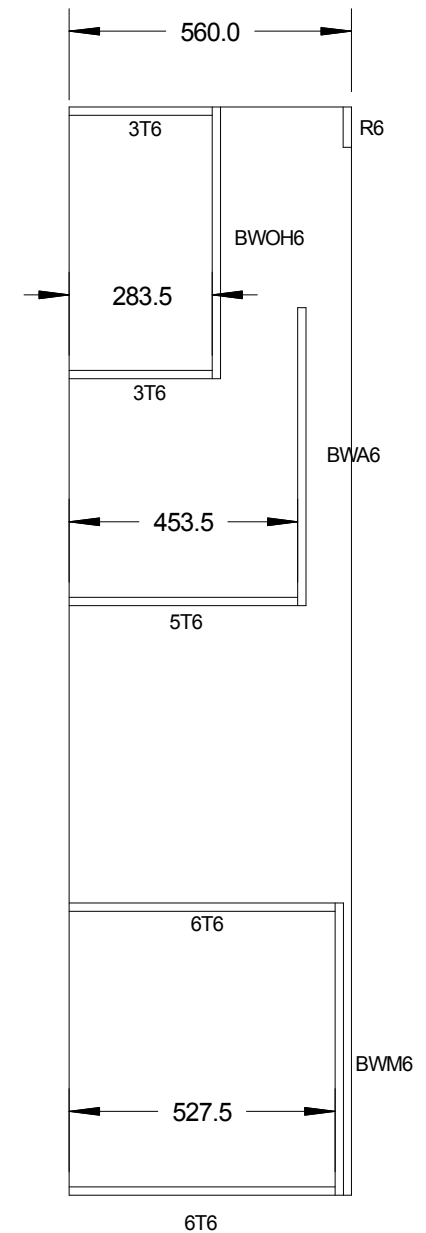
Vertical Lift Hinge Mechanism
(VERL600 - using 600 wide carcase)
Maximum Microwave Dimensions
Width 513mm
Height 385mm
Depth 433mm

Component List

- 1 x 6HTEBM-RH
- 1 x 6HTEBM-LH
- 2 x 6T6
- 1 x 5T6
- 2 x 3T6
- 1 x BWM6
- 1 x BWA6
- 1 x BWOH6
- 1 x R6

Other Components to go with MWOHM600

- 2 x 527H x 297W Doors
- 1 x 448H x 597W Microwave Flap (Optional)
- 2 x 283H x 597W Drawer Fronts
- 1 x Bag LEGM4 or (LEGP4)
- 1 VERL600 Lift up Hinge (Optional)
- 2 x DRM150G1/600 Metabox Drawers or (2 x MDD6)
- 4 x H107 Hinges & Plates
- 5 x Handles with Microwave Flap Option



End Elevation